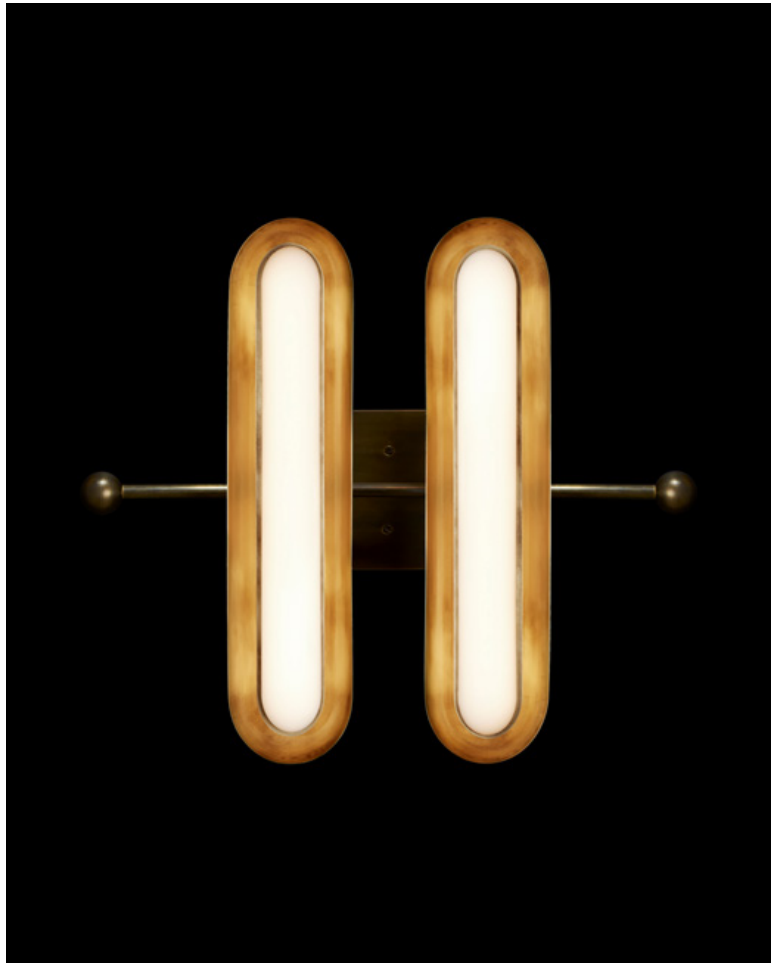


A P P A R A T U S



AGED BRASS

CIRCUIT : 2 SURFACE

REFERENCE

RHYTHM AND SYNCOPATION
HALSTON
AFTERGLOW

COMPOSITION

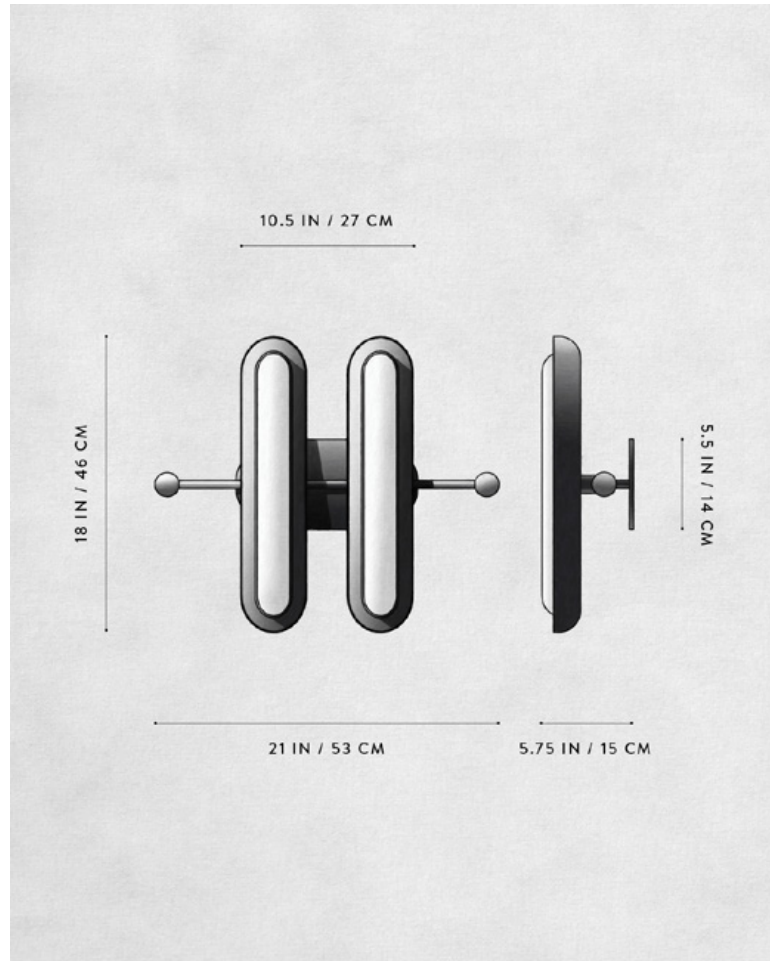
GLOWING GLASS CAPSULE
BRASS SHADE AND ARMATURE

A P P A R A T U S



OIL-RUBBED BRONZE

A P P A R A T U S



DIMENSIONS

WEIGHT

PRICE

VOLTAGE

LAMPING

DRIVER LIFE

DEPOSIT

BALANCE

LEAD TIME

CIRCUIT : 2 SURFACE

18 H, 21 W, 5.75 D IN

46 H, 53 W, 15 D CM

APPROX. 10 LBS / 5 KG

FROM \$5500

FROM \$6400 FOR TWO-TONE SHADES

TWO-TONE IS AGED BRASS SHADE INTERIOR
WITH BLACKENED BRASS SHADE EXTERIOR

120-240

UL / CE

2 X 16W DIMMABLE LED

1700 LUMENS EACH

2700K

50,000 HOURS

50% UPON ORDER

DUE PRIOR TO SHIPPING

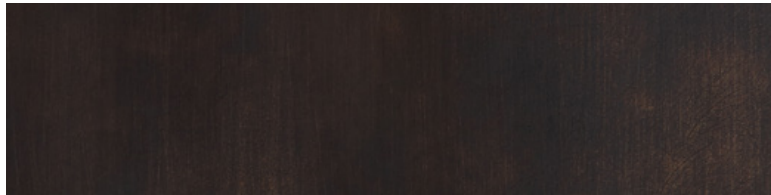
PLEASE REFER TO WEBSITE

FINISHED AND ASSEMBLED BY HAND IN NY
DOMESTIC AND IMPORTED COMPONENTS

A P P A R A T U S



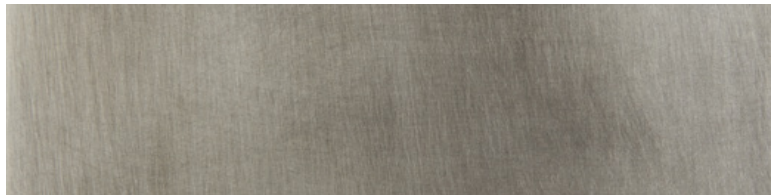
AGED BRASS



OIL-RUBBED BRONZE



BLACKENED BRASS



TARNISHED SILVER

METAL

CIRCUIT

AGED BRASS [WAXED]

OIL-RUBBED BRONZE [WAXED]

BLACKENED BRASS [WAXED]

TARNISHED SILVER [LACQUERED] ADD 35%